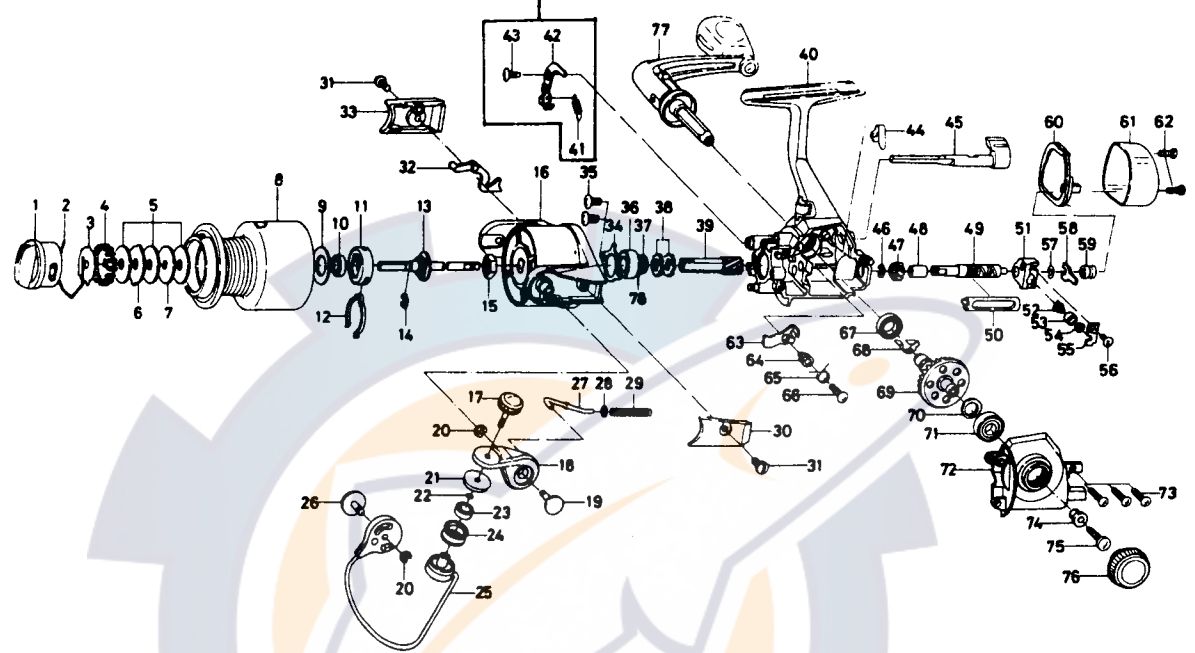


SPINNING REEL — EX600

* These parts are not assembled in silent anti-reverse model.



Key No. 2-8			Price	Key			Price
	F03-3901	Spool assembly	77.50				
No.	Part No.	Part Name	Price	No.	Part No.	Part Name	Price
1	F03-3801	Drag knob	26.40	39	F05-3601	Pinion gear	10.80
2	F44-2501	Drag washer retainer	.70	40	F06-6602	Body	45.00
3	F03-3201	Click plate washer	1.15	44	E26-8701	Anti-reverse cam spring	.60
4	E13-6301	Drag knob click plate	2.50	45	F01-2708	Anti-reverse lever	7.20
5	E13-6001	Drag washer	.70	46	B33-9801	Worm shaft gear retainer	.35
6	E13-6201	Eared washer	.70	47	E39-3001	Worm shaft gear	6.50
7	E13-6102	Key washer	.80	48	E29-6501	Worm shaft bush	.80
8	F03-4001	Spool assembly	N/A	49	F03-0401	Worm shaft	8.40
9	F06-2701	Spool washer	1.40	50	F03-2801	Worm shield cover	4.80
10	B35-8601	Ball bearing A	8.00	51	F01-1004	Oscillating slider	3.95
11	E12-2301	Click leaf spring holder	1.80	52	E12-2403	Oscillating pawl	4.95
12	B74-7702	Spool click leaf spring	.45	53	E12-4601	Oscillating pawl bush	2.10
13	F03-3501	Main shaft assembly	9.00	54	375-0800	Oscillating pawl washer	.40
14	320-1402	Ball bearing retainer	.55	55	E11-6801	Oscillating slider cover	.80
15	341-9204	Rotor nut	1.95	56	E15-0203	Oscillating slider cover screw	.70
16	F05-9601	Rotor assembly	28.00	57	375-4101	Worm shaft washer	.30
17	F01-5001	Line roller screw	6.50	58	E29-6701	Worm shaft retainer	.80
18	F03-0701	Bail arm	2.30	59	E29-6601	Worm shaft collar	2.35
19	F01-3501	Bail arm screw	2.50	60	F03-3101	Water shield	1.15
20	320-5901	Bail arm screw retainer	.50	61	F03-2002	Rear cover	54.00
21	F01-4901	Line roller collar	2.85	62	F01-6301	Rear cover screw	1.10
22	B85-3101	"O" ring	.60	63	E27-1301	Anti-reverse pawl	1.15
23	F05-5601	Ball bearing B	9.25	64	B95-9501	Anti-reverse pawl collar	.95
24	F06-3201	Line roller	37.80	65	B95-9602	Anti-reverse pawl spring A	.60
25	F03-0901	Bail	9.30	66	351-6401	Anti-reverse pawl screw	.45
26	F05-9801	Bail trip cam screw	2.85	67	F01-6401	Ball bearing D	9.20
27	F03-1101	Bail spring shaft	2.30	68	E29-6901	Anti-reverse pawl spring B	1.40
28	E11-5901	Bail spring washer	.60	69	F05-5701	Drive gear	16.50
29	F03-1201	Bail spring	.70	70	375-8502	Drive gear washer	.35
30	F03-0501	Bail spring cover	4.60	71	636-6401	Ball bearing C	8.25
31	F01-3701	Bail spring cover screw	1.95	72	F03-4101	Left side cover	18.50
32	F03-0801	Bail trip lever	2.55	73	351-1101	Side cover screw	.45
33	F03-0601	Bail trip cover	4.60	74	501-8501	Handle collar	.70
34	F03-2901	Bearing retainer	.70	75	F04-5001	Handle screw	5.10
35	351-1801	Bearing retainer screw	.45	76	F01-7301	Handle screw cap	9.25
36	636-6401	Ball bearing C	8.25	77	F03-3601	Handle assembly	29.60
37	E29-6101	Spacer	.70	78	375-8500	Bearing washer	.45
38	E27-1501	Anti-reverse ratchet	.75				